

# Welcome to Back-to-School Night!

Grade 6

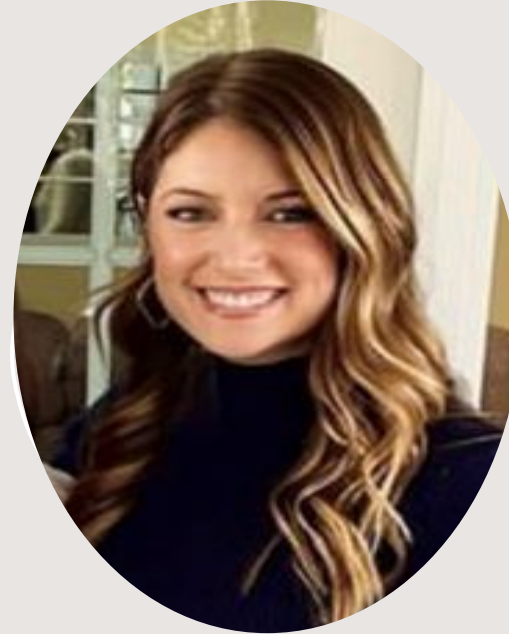




Ms. Brittany Hamilton  
6<sup>th</sup> grade teacher



Ms. Ashley Maginnis  
6<sup>th</sup> grade teacher



Ms. Kacey Norwood  
6<sup>th</sup> grade teacher



Mrs. Molly Meranda  
6<sup>th</sup> grade teacher

# Our Team!

Ms. Karen Helmer,  
Dean of Engagement



Ms. Kelly Baugh  
Assistant Principal



Ms. Tiffanie Wu  
Assistant Principal

# Our Leadership Team



Ms. Miah Ford  
Academic Dean

Dr. Jennifer Hertzberg  
Principal





**Mrs. Katie Travis**  
Special Education Teacher



**Ms. Clara Jeong**  
Special Education Teacher



**Mr. Todd Struzynski**  
Special Education Teacher



**Ms. Juanita Jackson**  
Instructional Assistant

# Our Team!



**Mrs. Tasha Climo**  
ESOL Teacher

**Mrs. Jen Bagnas**  
ESOL Teacher

**Mrs. Courtney McGowan**  
ESOL Teacher

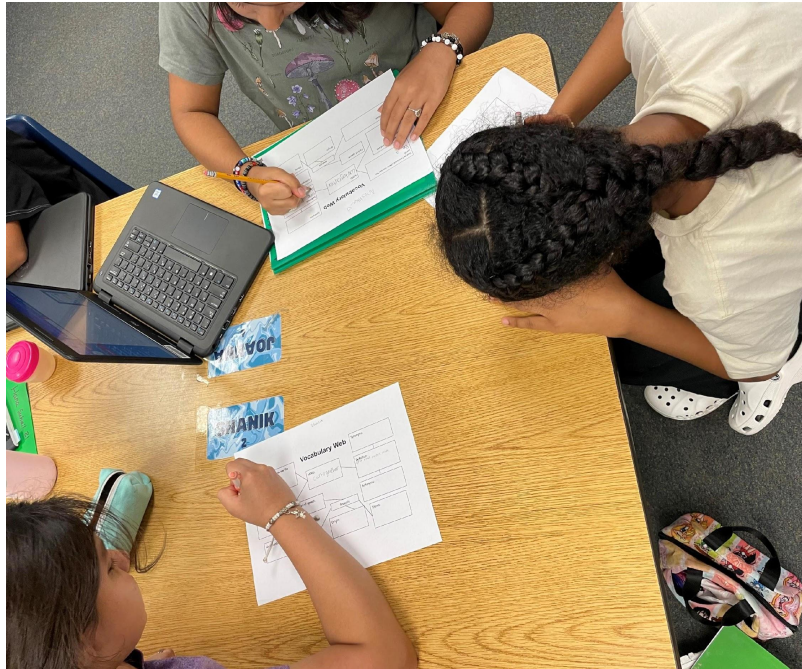
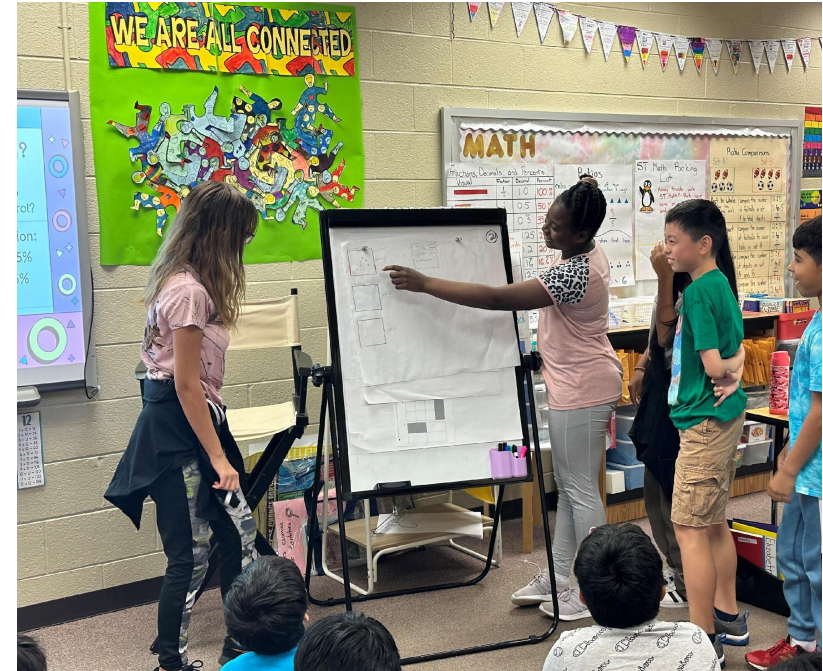
**Mrs. Rachel Tan**  
ESOL Teacher

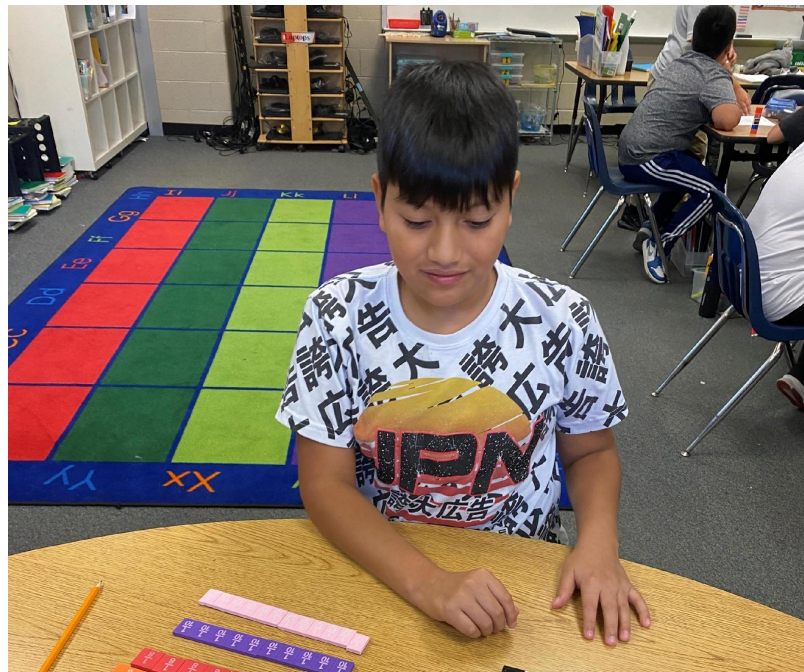
# Our Team!



**Making #CRESConnections to  
our classrooms!**

B







# Agenda

---

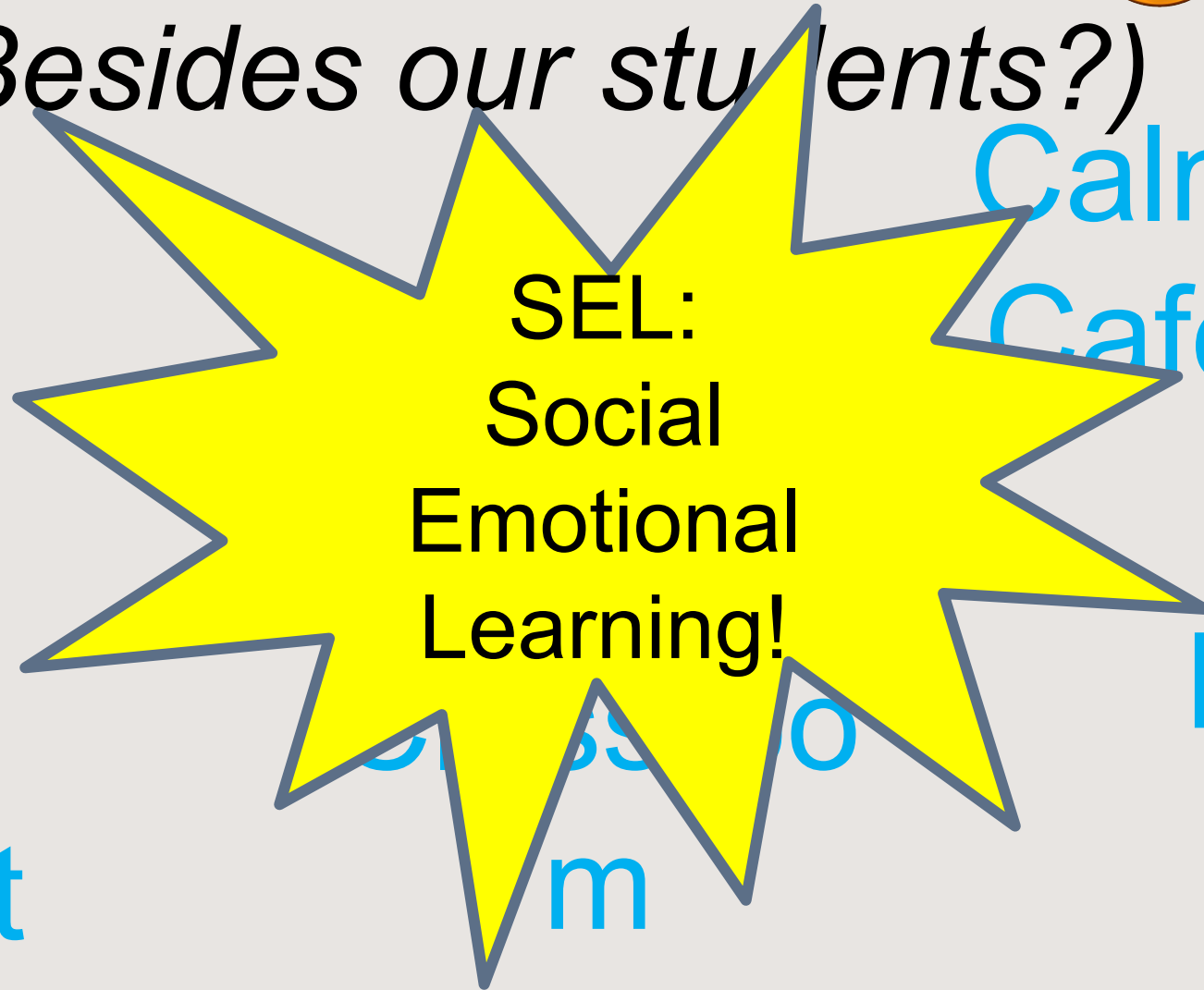
- What makes CRES special?
- Connecting to our ABCs: Attendance, Behavior, and Culturally Responsive Pedagogy
- Connecting to Core Instruction
- Questions

What makes Centre Ridge  
special?



*(Besides our students?)*

AVI  
D  
Portrait  
of a  
Graduat



SEL:  
Social  
Emotional  
Learning!

Calm  
Cafe

Project  
Zero

# Connecting to our **ABCs**

---

**A**ttendance

**B**ehavior

**C**ulturally Responsive Pedagogy

# Attendance

We miss our students when  
they are not here!

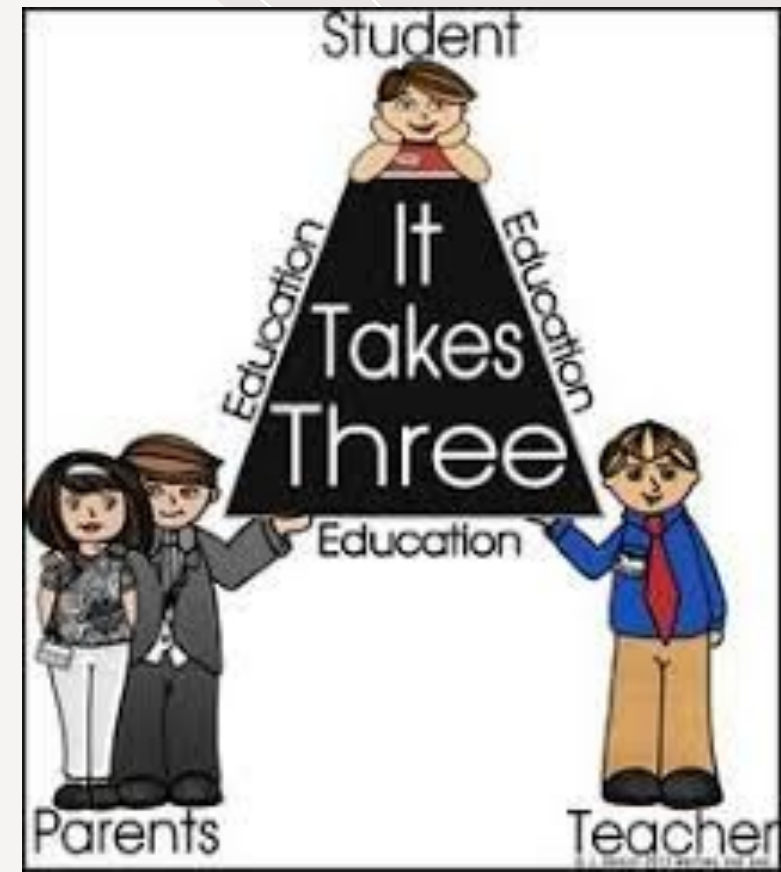


**ATTEND TODAY**  
**ACHIEVE TOMORROW!**



Fairfax County Public Schools 2023-2024 Standard School Year Calendar - Final Option - DRAFT

July 2023	August 2023	September 2023	October 2023	November 2023
Calendar grid for July 2023	Calendar grid for August 2023	Calendar grid for September 2023	Calendar grid for October 2023	Calendar grid for November 2023
December 2023	January 2024	February 2024	March 2024	April 2024
Calendar grid for December 2023	Calendar grid for January 2024	Calendar grid for February 2024	Calendar grid for March 2024	Calendar grid for April 2024
May 2024	June 2024	<p>FCPS</p>		<p>Legend</p> <p>Number of Days Instructional Days</p> <p>Number of Days Instructional Days</p>



# How Can Families Help?



# Behavior

"Rams respect  
ourselves, others, and  
our community."

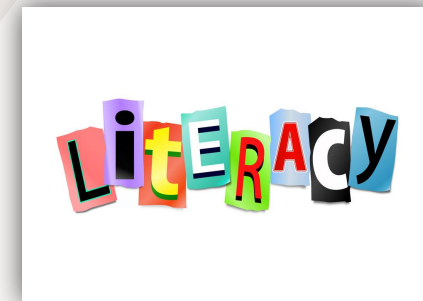
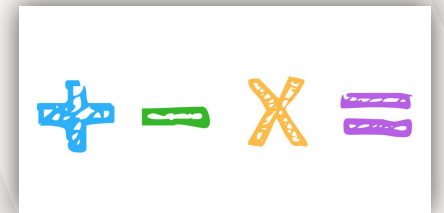
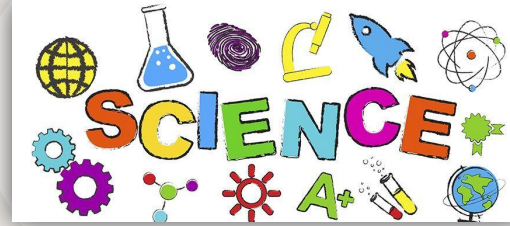




# Culturally Responsive Pedagogy

# Connecting to Core Instruction

What does learning look like  
and sound like in 6th grade?





# Literacy

---

Our literacy block consists of the following components:

Word Study	Language Comprehension	Writing	Small Groups	WIN (What I Need)
<ul style="list-style-type: none"><li>• 6<sup>th</sup> grade phonics instruction</li><li>• Prefixes and suffixes</li><li>• Decoding multisyllabic words</li></ul>	<ul style="list-style-type: none"><li>• Interactive read aloud</li><li>• Writing about reading</li><li>• Book club discussions</li></ul>	<ul style="list-style-type: none"><li>• Explicit foundational writing skills instruction</li><li>• Application in a longer writing assignment</li></ul>	<ul style="list-style-type: none"><li>• Lexia</li><li>• Small group instruction based on specific needs</li></ul>	<ul style="list-style-type: none"><li>• Flexible grouping</li><li>• Explicit phonics instruction</li><li>• Extension opportunities</li></ul>

# Mathematics

---

Math 6 and Math 7	Math WIN
<ul style="list-style-type: none"><li>• Number Talk</li><li>• Focus Lesson</li><li>• Small Groups/Stations/Independent Work</li><li>• Reflection</li> <li>• Exit Ticket Check-in</li><li>• Formative Assessments and Unit Tests</li></ul>	<ul style="list-style-type: none"><li>• Research-based intervention program based on student data</li></ul>

# Math 6 Overview

	Week 1	Week 2	Week 3	Week 4	Week 5	Week 6	Week 7	Week 8	Week 9
Quarter 1	Unit 1: Ratios			Unit 2: Fractions and Decimals			Unit 3		
Quarter 2	Unit 3: Rational Numbers and Exponents (cont.)			Unit 4: Integer Operations			Unit 5: Coordinate Plane and Congruence		
Quarter 3	Unit 6: Expressions, Equations, and Inequalities				Unit 7: Proportions				
Quarter 4	Unit 8: Circles and Geometric Measurement		Unit 9: Data Distributions			Unit 10: Moving Forward and Digging Deeper			

# Math 7 Overview

Quarter 1	Unit 1: The Rational Number System	Unit 2: Proportions and Linear Relationships	Unit 3: Real Number and Exponents
Quarter 2	Unit 3 (cont.)	Unit 4: Expressions, Equations, and Inequalities	Unit 5: Introduction to Functions
Quarter 3	Unit 5 (cont.)	Unit 6: Triangles and Quadrilaterals	Unit 7: Probability of Random Events
Quarter 4	Unit 8: Data Distributions	Unit 9: Surface Area and	Unit 10: Moving Forward and Digging Deeper

# Science

---

Quarterly Units	What it Looks Like
Q1: Astronomy Q2: Weather Q3: H2O Q4: Energy	<ul style="list-style-type: none"><li>• Whole group instruction</li><li>• Hands on experiences</li><li>• Note-taking</li><li>• PBLs</li></ul>

# Social Studies

Quarterly Units	What it Looks Like
<ul style="list-style-type: none"><li>• Global Citizens</li><li>• Primary Sources</li><li>• Geography</li><li>• Indigenous People</li><li>• West African Empires</li><li>• European Exploration and Colonization</li><li>• Colonial America</li><li>• American Revolution</li><li>• New Nation</li><li>• Westward Expansion and Reform</li><li>• Civil War</li></ul>	<ul style="list-style-type: none"><li>• Whole group instruction</li><li>• Note-taking</li><li>• PBAs</li></ul>

# Health & Family Life Education

---

Health lessons are provided within the classroom.

Family Life Education will be taught in December unless a student has been opted out.

The topics covered in FLE are puberty, personal hygiene, reproductive system, human reproduction, sexually transmitted infections, abstinence, and refusal

# Daily Schedule

---

8:30-8:45	Arrival
8:45-9:10	Morning Meeting
9:10-10:10	Specials
10:10-11:25	Math
11:30-12:00	Recess
12:00-12:30	Lunch
12:35-2:25	Literacy
2:25-3:15	Social Studies and Science
3:15-3:20	Closing Circle
3:20	Dismissal



# Questions

?

